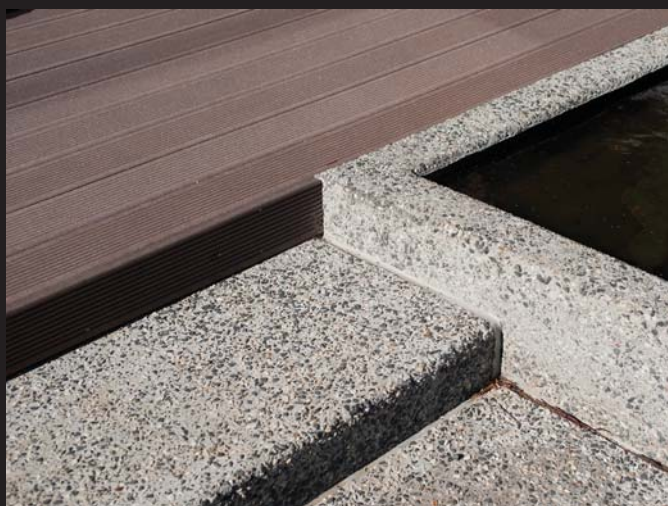




urbanedge_deck 143

ultra**design** composites™

a specialist division of  **Le Messurier**



The Future of Decking

Change is inevitable as worldwide demand for product innovation, whilst optimising resources, continues at a relentless pace. Ultradesign composites are supported by 160 years of experience in timber and building products, providing valuable experience and expertise to evaluate industry and environmental changes, and recognise significant turning points. This era of composites is one such turning point for the timber and building industry as well as the consumer.

New technologies have continued to improve across all frontiers, enabling composite products to be designed to not only match the manufacturing requirements but to also better suit the end use. The future thinking in composites has immediate cost and environmental benefits now and will be truly significant for future generations.

urbanedge_deck 143® is a contemporary composite of sustainably resourced wood fibres and recycled plastics (polymer). Engineered and manufactured in Germany to a modern design profile, it is environmentally friendly with an outstanding life cycle and warranty.

A leader for outdoor surfaces, the urbanedge_deck 143 material is stable and resistant to saltwater and fungi. With exceptional resistance to oils and UV exposure, urbanedge_deck's outstanding performance is matched with a 10 year warranty.

Offering exceptional benefits over traditional materials, urbanedge_deck 143 will not rot, crack, splinter or rust, and will require no sanding, painting or oiling. Termite resistant and exceptionally durable, urbanedge_deck 143 is a true low maintenance product.

The 143mm decking boards are double-sided, offering two design profiles which can be mixed should the highlight suit the project. The urban groove design gives both a fine and coarse pattern profile, both of which are very comfortable to walk on and provide superior slip resistance.

An uncomplicated material to work with, urbanedge_deck 143 decking boards can be cut and shaped with the use of current carpentry tools. Two varieties of unique concealed fixing systems are available, giving the choice of stainless steel or black plastic clips. urbanedge_deck 143 can also be installed using the traditional top-fixing method.

The unique attributes of urbanedge_deck 143 has seen this product used nationally in all sectors, from iconic commercial and education projects to CBD studio apartments.

No Rotting

No Cracking

No Rust

No Sanding

No Oiling

No Splintering

Hidden Fixings

PEFC-Certified

Termite Resistant

Wood Polymer Composite

German Engineered & Manufactured

Easy to Care For & Low-Maintenance

CHOICE of 2 COLOURS

10 YEAR WARRANTY



Colours





Specification Overview

Size

143 mm x 23.5 mm [solid]

Spans

400 mm [on-centre]

Lengths

5.6 metres

Weight

3.12kg / lineal metre

Composite

60% PEFC certified sustainable wood fibre
40% recycled high density polyethylene

Cut & Shaped

use of current carpentry tools

Finish

brushed fine grooves
brushed broad grooves

Colours

ash grey, bahama brown

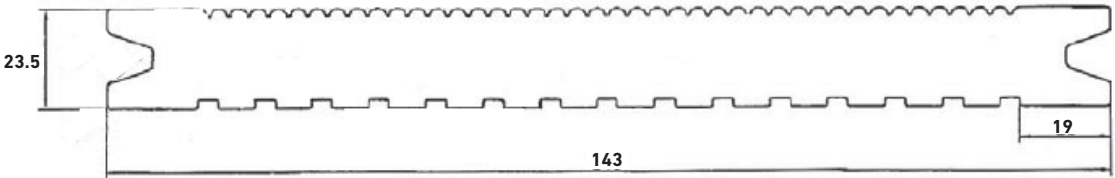
Slip Resistance

fine grooves R12 [AS/NZS 4586:2004]
broad grooves R13 [AS/NZS 4586:2004]

Storage & Handling

- » packs of urbanedge_deck 143 should be stored in a dry flat area, under cover and off the ground
- » please note urbanedge_deck 143 is a finished product so please take care when handling

Dimensions



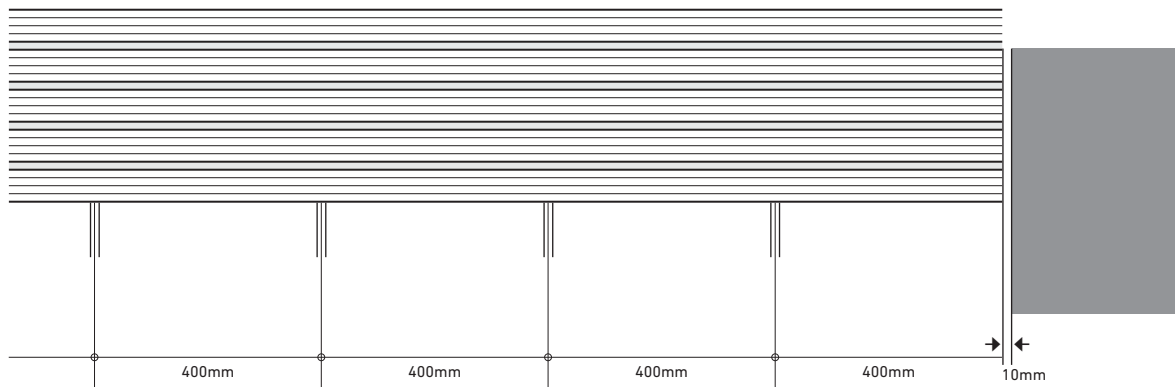
Material Properties

| | |
|--------------------------------------|----------------|
| Linear thermal expansion coefficient | ≤ 0.025 mm/m°C |
| Density | 1080kg/m³ |
| Dynamic friction coefficient [dry] | 0.33 |
| Dynamic friction coefficient [wet] | 0.34 |

Moisture Absorption

| Moisture Absorption [full submersion] | |
|---------------------------------------|---------|
| 24 hours | 0.05% |
| 21 days | < 0.12% |
| 28 days | < 2% |




Fixing Centres



Fixing

urbanedge_deck 242 can be installed using any of the following methods

smart fixings

| | | | |
|------------|---|--|---|
| material: | stainless steel [grade 304] | smart fixing: |  |
| spacing: | 4 - 5 mm | | |
| pack size: | box of 50 clips |   | |
| coverage: | per box of 50 clips: 3 square metres | | |

clamp fixings

| | | | |
|------------|---|--|---|
| material: | plastic | clamp fixing: | edge clamp fixing: |
| spacing: | 6 - 8 mm |  |  |
| pack size: | box of 50 clips [clamp] box of 25 clips [edge clamp] |   | |
| coverage: | per box of 50 clips: 3 square metres | | |

top fixing

All urbanedge_deck products can be traditionally installed via the top-fixing method, however pre-drilling is essential (for both screw and/or nail fixing).

fixing with screws

Stainless steel screws are recommended. Screws should finish 'flush' with the top of the urbanedge_deck board.

fixing with nails

Rust-resistant, hot-dipped galvanized nails are recommended. Nails should finish 'flush' with top of the urbanedge_deck board. The preferred method of fixing with nails is by hand.



Important

- urbanedge_deck 143 is not manufactured nor does it carry accreditation or approval for use as a structural product.
- The 10 year warranty on the mechanical integrity of the boards is limited to the replacement of any defective materials. Not respecting the manufacturer's instructions may render the warranty void.
- For safety reasons: wear protective gloves and goggles when using power tools. Do not wear free hanging clothing or jewellery that can get entangled into turning parts of your tools; avoid the inhalation of saw dust, especially over long periods.
- All information is given in good faith and is based on the best available current knowledge. Therefore, it cannot be binding and may not be used against ultradesign composites.

Recommended Tools

- urbanedge_deck 143 can easily be cut, routed and planed using standard wood working tools. When cutting, it is recommended to use coarse carbide tip blades. A fine tip blade tends to give more friction and thus more unexpected wear on the tool.
- For fastening with the stainless steel concealed fixing clips, we recommend AISI 304 screws 3.5 x 25 mm.
- When direct fastening with screws is preferred, stainless steel 4 x 50 mm screws are advised. Possible expansion of the boards needs to be accounted for.

Storage & Handling

- Profiles need to be stored horizontally, well supported on a solid, flat pallet.
- ultradesign composites advise to acclimatise the boards for 24 hours in a well-ventilated area before use, shielded from direct sun light so as to install boards of uniform temperature.
- Please note that urbanedge_deck 143 is a finished product, take due care.

Terrain & Sub-Structure

- A slope of 1% (1 cm per metre) is expected in the direction of the joists. This should allow drainage of rain water, whilst ensuring that no water is left standing at the low end of the deck.
- A sufficient gap needs to be respected between joists lengthwise, to allow for water drainage and possible expansion.
- Except for the outermost deck joists, the supports should not be fastened to the soil.
- Careful attention must be paid to joist spacing; joist spans will depend upon the load on the board; residential joist centres should be set at 400 mm maximum. This spacing is reduced to 300 mm when the decking is laid diagonally to the support structure.

Thermal Expansion

- To compensate for thermal expansion, a butt joint gap as given in the table below should be allowed. A 4 mm side gap between boards is required.
- The specifically designed concealed clips serve this purpose, whilst allowing board movement. The clips were also developed for ease when butt joining boards.
- The gap between a board and any fixed obstacle (e.g. wall, post, pool side), must be spaced at 10mm.

| Butt joint gap (in mm) for an expected high board temperature of 60°C | | | | |
|---|--------------|-----|-------|-------|
| Installation Temperature (°C) | Board Length | | | |
| | 2.4 m | 3 m | 3.6 m | 4.8 m |
| 10 | 4 | 5 | 6 | 8 |
| 15 | 4 | 5 | 6 | 8 |
| 20 | 3 | 4 | 5 | 6 |
| 25 | 3 | 4 | 5 | 6 |
| 30 | 3 | 4 | 4 | 5 |
| 35 | 3 | 4 | 4 | 5 |
| ** Support every deck board on at least three joists ** | | | | |

Mounting & Fastening

- urbanedge_deck 143, just like natural wood, needs to be allowed to dry from both sides. Therefore, sufficient unobstructed airflow along the joists is needed below the deck. Add flow-through vents around the rim.
- urbanedge_deck 143 requires each end to be fully supported and fixed with two fasteners.
- Every board, including short pieces, should be supported by at least three joists.
- Stainless steel (or alternative black plastic) clips were specifically developed for concealed fastening. The stainless steel clips leave a gap between each decking board of approximately 4 mm, whilst the black plastic fixing allows a gap of approximately 8 mm.
- When opting for direct screwing, AISI304 stainless steel screws are recommended. Be sure to pre-drill and countersink.
- Do not screw through the profile at less than 30 mm from the board end without pre-drilling a hole, in order to prevent splitting.
- The board surface is brushed, which can change the perceived colour depending on orientation. To ensure you orient the boards to achieve the desired effect, a notch is foreseen in one side of the board end/edge.

Finishing

- For an impeccable finish, trim sides of deck with a power saw to get an even edge.
- We recommend leaving the joists slightly longer than the deck rim. This then serves as support to put the side finishing boards when the final touches are put to the deck. This allows to easily keep the necessary ventilation gaps available for unobstructed air flow.

Maintenance and cleaning

- Very little maintenance is needed to keep the urbanedge_deck 143 in optimum condition. Brushing with a stiff broom is usually sufficient to keep the surface clean from dust and debris. A light scrubbing application of warm water and mild cleaning detergent rinsed thoroughly with water is also acceptable.
- High pressure cleaning is allowed if the applied pressure is not higher than 80 bars and a jet distance of 200mm is maintained. Only spray in the groove direction, avoiding circular movements.
- In the unlikely case that oil or corrosive products stain urbanedge_deck 143, the surface can be manually sanded with rough sandpaper (80 grit) in the direction of the grooves.

Weathering process

- urbanedge_deck 143 is expected to incur some weathering over time. During the first 12 weeks of exposure to the elements, urbanedge_deck 143 will weather, typically to a slightly darker shade of colour. From that moment onwards, virtually no further change in colour can be observed.
- urbanedge_deck 143 is designed and manufactured to keep its mechanical stability over time. It is a product for outdoor applications and stabilised so as to keep from plastic degrading, even when exposed to severe weather conditions.

ultradesign composites offer a comprehensive range of innovative, composite building products, comprising of recycled industrial plastics and sustainably resourced wood fibres.

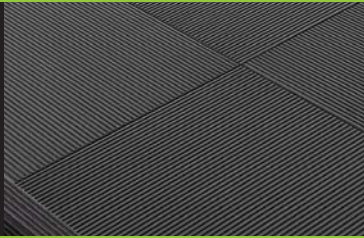
urbanedge_deck is available in two design profiles of urban edge groove or embossed wood grain, and has width options of 90mm, 143mm and 242mm, with four colour options: ash grey, bahama brown, sand and river bank.

urbanedge_deck



neourban_tile carries the urban groove design profile and is 442mm wide, with three colour options: ash grey, bahama brown, and terracotta.

neourban_tile



urbanedge_screen has a smooth design profile and is 60mm wide, with two colour options: ash grey and bahama brown.

urbanedge_screen



urbanedge_cladding is available in two design profiles of structura (double sided texture option) or siding, and has up to four colour options.

urbanedge_cladding



urbantable_tops are available in 100+ decors ranging from modern design, rustic rural charm or timeless and classic aesthetics. Available in a variety of sizes and shapes.

urban



1300 687 343

questions@ultradesigncomposites.com.au

www.ultradesigncomposites.com.au

a specialist division of **Le Messurier**

ultradesign composites