



## Windows

As the leader in high energy-rated timber windows, we understand that our clients are as individual as their projects. As such, we provide customised solutions and superior service regardless of project size or location.

With our knowledge and experience, architects, developers and home owners can be assured of a product that is superior in many ways - one that gives design flexibility and will achieve top energy ratings. With virtually no limitations to size or shape, our windows and doors are adaptable to any wall and suitable to any style of building.

Paarhammer windows achieve excellent energy ratings with U-values from 0.8 (WERS), that's energy savings of up to 85%, and superior noise reduction of up to 45dB. In addition to superior thermal qualities, our frames also have an ultimate strength test of 2300+3300pa (N4), with the wood-Alu Range N6/C4, and water penetration of 200pa N4 (C2), giving our window systems unparalleled strength and security. Multi point metal-to-metal security hardware is standard, with automation also available.

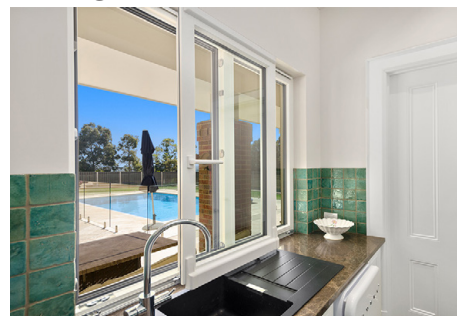
**Tilt & turn**



**Picture - fixed**



**Sliding**



**Bi-fold**



**Clerestory - tilt**



**Shaped**





Easily operated with the turn of the handle: tilt inwards at the top for child proof ventilation; turn and fully open for easy cleaning. Energy efficient and draft proof, with high sound protection, and secure locking.



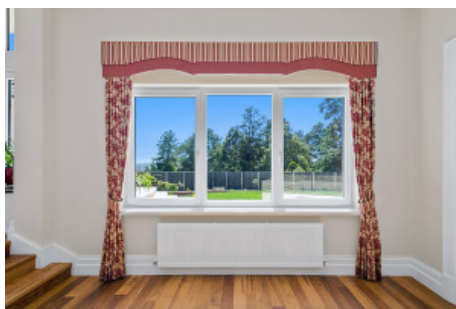
## Specifications

- Internal IV 68mm Victorian Ash frame, low VOC spray-painted or stained in the colour of your choice
- External aluminium cladding powder-coated in wide range of colours
- Timber and cladding separated by 3mm clip system to stop condensation and subsequent rot
- Triple glazed 2x up to 16mm or double glazed 1x up to 22mm argon filled gap
- Choice of glass combinations
- Custom made
- German tilt & turn hardware fittings
- Seals and multi-point locking
- Childproof available
- Suited for bushfire areas up to and including BAL-29, and for Passive House

## Size:

- Minimum 600mm height x 420mm width
- Width up to 1400mm at min height of 1500mm, max 2100mm
- Height up to 2700mm at max width of 1000mm

WERS energy rating: from a very low 1.0







Fixed panes enable you to enjoy a clear view without obstruction, acting as a picture frame for the scenery outside of the window. Often used in combination with openable windows or doors.



## Specifications

- Internal IV 68mm timber frame, low VOC spray-painted or stained in the colour of your choice
- External aluminium cladding powder-coated in a wide range of colours
- Timber and cladding separated by 3mm clip system to stop condensation and subsequent rot
- Triple glazed 2x up to 16mm or double glazed 1x up to 22mm argon filled gap
- Choice of glass combinations
- Custom made
- Suited for bushfire areas up to and including BAL-29, and for Passive House

## Size:

- Width up to 4000mm
- Height up to 4000mm
- Maximum overall 11m<sup>2</sup>

WERS energy rating: from a very low 0.8





For special spaces where only a sliding window is suitable. Parallel-slide-tilt or lift-slide options are available. Highly energy efficient and draft proof with high sound protection. Custom made to size and finish.



## Specifications

- Internal IV 68mm timber frame, low VOC spray-painted or stained in the colour of your choice
- External aluminium cladding powder-coated in a wide range of colours
- Timber and cladding separated by 3mm clip system to stop condensation and subsequent rot
- Triple glazed 2x up to 16mm or double glazed 1x up to 22mm argon filled gap
- Choice of glass combinations
- Custom made
- German sliding hardware (parallel-slide-tilt or lift-slide)
- Seals and multi-point locking
- Suited for bushfire areas up to and including BAL-29, and for Passive House

## Size:

- Width up to 6000mm
- Height up to 2400mm

WERS energy rating: from a very low 1.0



Perfect for opening up a large space. High energy efficiency and operated with a handle on every second window. No rattling and no need for shoot bolts. Inside folding only, also with tilt function.



## Specifications

- Internal IV 68mm timber frame, low VOC spray-painted or stained in the colour of your choice
- External aluminium cladding powder-coated in a wide range of colours
- Timber and cladding separated by 3mm clip system to stop condensation and subsequent rot
- Triple glazed 2x up to 16mm or double glazed 1x up to 22mm argon filled gap
- Choice of glass combinations
- Custom made, inside folding only, also available with tilt function
- German bi-fold hardware fittings
- Seals and multi-point locking
- Suited for bushfire areas up to and including BAL-29, and for Passive House

## Size:

- Width up to 6000mm
- Height up to 2400mm

WERS energy rating: U-value from a very low 1.0





Tilting inwards at the top for ventilation, windows can be horizontal or vertical. The handle controls the mechanics and multi-point locking within the frame. Can be automated for hard to reach areas.



## Specifications

- Internal IV 68mm timber frame, low VOC spray-painted or stained in the colour of your choice
- External aluminium cladding powder-coated in a wide range of colours
- Timber and cladding separated by 3mm clip system to stop condensation and subsequent rot
- Triple glazed 2x up to 16mm or double glazed 1x up to 22mm argon filled gap
- Choice of glass combinations
- Custom made
- German tilt hardware, multi-point locking
- Seals to eliminate drafts
- Can be automated with concealed chain drive
- Suited for bushfire areas up to and including BAL-29, and for Passive House

## Size:

- Maximum width 3000mm at maximum height of 700mm
- Height up to 2700mm at maximum width of 1500mm
- Height minimum 450mm

WERS energy rating: from a very low 1.0





Custom made to size and shape to suit any building. Angled, round, oval or curved, these windows can be made in a fixed pane or can be openable, and are highly energy efficient.



## Specifications

- Internal IV 68mm timber frame, low VOC spray-painted or stained in the colour of your choice
- External aluminium cladding powder-coated in a wide range of colours
- Timber and cladding separated by 3mm clip system to stop condensation and subsequent rot
- Triple glazed 2x up to 16mm or double glazed 1x up to 22mm argon filled gap
- Choice of glass combinations
- Custom made
- German tilt and turn fittings, multi-point locking
- Seals to eliminate drafts
- Childproof available
- Also fixed shapes/picture windows available
- Suited for bushfire areas up to and including BAL-29, and for Passive House

## Size:

- Minimum 600mm height x 600mm width
- Width up to 1400mm at min height of 1500mm, max 2100mm
- Height up to 2700mm at max width of 1000mm
- Angled shapes only, for rounded shapes please see **Architectural Timber Windows - Shaped**

WERS energy rating: from a very low 1.0

